



## Verification Report

No. HKGEC25001106405

Date : Sep 11, 2025

Page 1 of 16

Client Name: RUBADUE WIRE CO., INC.

Client Address: 5610 BOEING DRIVE LOVELAND, COLORADO 80538 USA

Sample Name : ETFE  
Colour : VARIOUS  
Country of Origin : USA

The above sample(s) and information were provided by the client.

SGS Job No. : 5623460  
Reference No. : 2508108  
Sample Receiving Date : Aug 25, 2025  
Verification Period : Aug 25, 2025 – Sep 10, 2025  
Verification Requested : With reference to GB/T 26572-2011 Requirement of concentration limits for certain restricted substances in electrical and electronic products.  
Verification Method(s) : Please refer to next page(s).  
Verification Result(s) : Please refer to next page(s).

### Test Result Summary

Test Items	Conclusion
GB/T 26572-2011 "Requirement of concentration limits for certain restricted substances in electrical and electronic products" and its amendment No.1 and the requirement of Exemption List for the Restriction of Hazardous Substances of the Standard Achieving Management Catalogue - Lead, Mercury, Cadmium, Hexavalent chromium, Polybrominated biphenyls (PBB), Polybrominated diphenyl ethers (PBDE), Dibutyl phthalate (DBP), Diisobutyl phthalate (DIBP), Butyl benzyl phthalate (BBP) and Bis(2-ethylhexyl) phthalate (DEHP)	PASS

Signed for and on behalf of  
SGS Hong Kong Limited

Lam Ka Yung, Allen  
Approved Signatory

This document is issued by the Company subject to its General Conditions of Service printed overleaf, available on request or accessible at <http://www.sgs.com/en/Terms-and-Conditions.aspx> and, for electronic format documents, subject to Terms and Conditions for Electronic Documents at <http://www.sgs.com/en/Terms-and-Conditions/Terms-e-Documents.aspx>. Attention is drawn to the limitation of liability, indemnification and jurisdiction issues defined therein. Any holder of this document is advised that information contained hereon reflects the Company's findings at the time of its intervention only and within the limits of Client's instructions, if any. The Company's sole responsibility is to its Client and this document does not exonerate parties to a transaction from exercising all their rights and obligations under the transaction documents. This document cannot be reproduced except in full, without prior written approval of the Company. Any unauthorized alteration, forgery or falsification of the content or appearance of this document is unlawful and offenders may be prosecuted to the fullest extent of the law.

Unless otherwise stated the results shown in this test report refer only to the sample(s) tested and such sample(s) are retained for 30 days only.

SGS Hong Kong Limited | Office: Units 303 & 305, 3/F Building 22E, Phase 3, HK Science Park, New Territories, Hong Kong t (852) 2334 4481 f (852) 2764 3126 e [mktg.hk@sgs.com](mailto:mktg.hk@sgs.com)  
Laboratory: 1/F, Units 16-29 3/F, 4/F & 5/F, On Wui Centre, 25 Lok Yip Road, Fanling, New Territories, Hong Kong. [www.sgs.com/en-hk/](http://www.sgs.com/en-hk/)



## Verification Report

No. HKGEC25001106405

Date : Sep 11, 2025

Page 2 of 16

### Verification Methods:

1. Disassembly and disjointment were performed for the submitted samples.
2. Tests were performed for the samples indicated by the photos in this report
  - (1) With reference to GB/T 39560.301-2020, Screening by EDXRF spectroscopy. (Decision Rule; please refer to appendix 1: Category 9).
  - (2) Wet chemical test method: With reference to GB/T 39560.4-2021 (Decision Rule: please refer to appendix 1: Category 6), GB/T 39560.5-2021 (Decision Rule: please refer to appendix 1: Category 6), GB/T 39560.701-2020 (Decision Rule: please refer to appendix 1: Category 4), GB/T 39560.702-2021 (Decision Rule: please refer to appendix 1: Category 6), GB/T 39560.6-2020 (Decision Rule: please refer to appendix 1: Category 6) and GB/T 39560.8-2021 (Decision Rule: please refer to appendix 1: Category 6), analyzed by ICP-OES/AAS, UV-Vis and GC-MS.

This document is issued by the Company subject to its General Conditions of Service printed overleaf, available on request or accessible at <http://www.sgs.com/en/Terms-and-Conditions.aspx> and, for electronic format documents, subject to Terms and Conditions for Electronic Documents at <http://www.sgs.com/en/Terms-and-Conditions/Terms-e-Document.aspx>. Attention is drawn to the limitation of liability, indemnification and jurisdiction issues defined therein. Any holder of this document is advised that information contained hereon reflects the Company's findings at the time of its intervention only and within the limits of Client's instructions, if any. The Company's sole responsibility is to its Client and this document does not exonerate parties to a transaction from exercising all their rights and obligations under the transaction documents. This document cannot be reproduced except in full, without prior written approval of the Company. Any unauthorized alteration, forgery or falsification of the content or appearance of this document is unlawful and offenders may be prosecuted to the fullest extent of the law.

Unless otherwise stated the results shown in this test report refer only to the sample(s) tested and such sample(s) are retained for 30 days only.

SGS Hong Kong Limited | Office: Units 303 & 305, 3/F Building 22E, Phase 3, HK Science Park, New Territories, Hong Kong t (852) 2334 4481 f (852) 2764 3126 e [mktg.hk@sgs.com](mailto:mktg.hk@sgs.com)  
Laboratory: 1/F, Units 16-29 3/F, 4/F & 5/F, On Wui Centre, 25 Lok Yip Road, Fanling, New Territories, Hong Kong. [www.sgs.com/en-hk/](http://www.sgs.com/en-hk/)



## Verification Report

No. HKGEC25001106405

Date : Sep 11, 2025

Page 3 of 16

### Verification Part Description:

SN ID	Sample No	SGS Sample ID	Description
SN1	A1	HKG25-0011064-0001.C001	Silvery metal plating - Wire(Tin-Plated Copper Wire)
SN2	A2	HKG25-0011064-0001.C002	Coppery metal - Wire(Tin-Plated Copper Wire)
SN3	A3	HKG25-0011064-0001.C003	Silvery metal plating - Wire
SN4	A4	HKG25-0011064-0001.C004	Coppery metal - Wire
SN5	A5	HKG25-0011064-0001.C005	Red metal plating - Wire
SN6	A6	HKG25-0011064-0001.C006	Coppery metal - Wire
SN7	A7	HKG25-0011064-0001.C007	Coppery metal - Wire
SN8	A8	HKG25-0011064-0001.C008	Translucent plastic pellet
SN9	A9	HKG25-0011064-0001.C009	Grey plastic pellet
SN10	A10	HKG25-0011064-0001.C010	Black plastic pellet
SN11	A11	HKG25-0011064-0001.C011	Yellow plastic pellet
SN12	A12	HKG25-0011064-0001.C012	Red plastic pellet
SN13	A13	HKG25-0011064-0001.C013	White plastic pellet
SN14	A14	HKG25-0011064-0001.C014	Orange plastic pellet
SN15	A15	HKG25-0011064-0001.C015	Brown plastic pellet
SN16	A16	HKG25-0011064-0001.C016	Blue plastic pellet
SN17	A17	HKG25-0011064-0001.C017	Green plastic pellet

This document is issued by the Company subject to its General Conditions of Service printed overleaf, available on request or accessible at <http://www.sgs.com/en/Terms-and-Conditions.aspx> and, for electronic format documents, subject to Terms and Conditions for Electronic Documents at <http://www.sgs.com/en/Terms-and-Conditions/Terms-e-Documents.aspx>. Attention is drawn to the limitation of liability, indemnification and jurisdiction issues defined therein. Any holder of this document is advised that information contained hereon reflects the Company's findings at the time of its intervention only and within the limits of Client's instructions, if any. The Company's sole responsibility is to its Client and this document does not exonerate parties to a transaction from exercising all their rights and obligations under the transaction documents. This document cannot be reproduced except in full, without prior written approval of the Company. Any unauthorized alteration, forgery or falsification of the content or appearance of this document is unlawful and offenders may be prosecuted to the fullest extent of the law.

Unless otherwise stated the results shown in this test report refer only to the sample(s) tested and such sample(s) are retained for 30 days only.

SGS Hong Kong Limited | Office: Units 303 & 305, 3/F Building 22E, Phase 3, HK Science Park, New Territories, Hong Kong t (852) 2334 4481 f (852) 2764 3126 e [mktg.hk@sgs.com](mailto:mktg.hk@sgs.com)  
Laboratory: 1/F, Units 16-29 3/F, 4/F & 5/F, On Wui Centre, 25 Lok Yip Road, Fanling, New Territories, Hong Kong. [www.sgs.com/en-hk/](http://www.sgs.com/en-hk/)



## Verification Report

No. HKGEC25001106405

Date : Sep 11, 2025

Page 4 of 16

### Verification Results:

In accordance with the result of material risk assessment, the following disjointed parts in the submitted sample have been verified. (Unless otherwise specified, the unit is mg/kg).

Test Item(s)	A1	A2	A3	A4	A5	A6	A7	A8
Pb	BL	BL	BL	BL	BL	BL	BL	BL
Cd	BL	BL	BL	BL	BL	BL	BL	BL
Hg	BL	BL	BL	BL	BL	BL	BL	BL
Cr(VI) ▼	BL	BL	BL	BL	BL	BL	BL	BL
PBBs	---	---	---	---	---	---	---	BL
PBDEs	---	---	---	---	---	---	---	BL
DBP	---	---	---	---	---	---	---	BL
BBP	---	---	---	---	---	---	---	BL
DEHP	---	---	---	---	---	---	---	BL
DIBP	---	---	---	---	---	---	---	BL
Conclusion	PASS	PASS	PASS	PASS	PASS	PASS	PASS	PASS

Test Item(s)	A9	A10	A11	A12	A13	A14	A15	A16
Pb	BL	BL	BL	BL	BL	BL	BL	BL
Cd	BL	BL	BL	BL	BL	BL	BL	BL
Hg	BL	BL	BL	BL	BL	BL	BL	BL
Cr(VI) ▼	BL	BL	BL	BL	BL	BL	BL	BL
PBBs	BL	BL	BL	BL	BL	BL	BL	BL
PBDEs	BL	BL	BL	BL	BL	BL	BL	BL
DBP	BL	BL	BL	BL	BL	BL	BL	BL
BBP	BL	BL	BL	BL	BL	BL	BL	BL
DEHP	BL	BL	BL	BL	BL	BL	BL	BL
DIBP	BL	BL	BL	BL	BL	BL	BL	BL
Conclusion	PASS	PASS	PASS	PASS	PASS	PASS	PASS	PASS

Test Item(s)	A17
Pb	BL
Cd	BL
Hg	BL
Cr(VI) ▼	BL
PBBs	BL
PBDEs	BL
DBP	BL
BBP	BL
DEHP	BL
DIBP	BL
Conclusion	PASS

This document is issued by the Company subject to its General Conditions of Service printed overleaf, available on request or accessible at <http://www.sgs.com/en/Terms-and-Conditions.aspx> and, for electronic format documents, subject to Terms and Conditions for Electronic Documents at <http://www.sgs.com/en/Terms-and-Conditions/Terms-e-Documents.aspx>. Attention is drawn to the limitation of liability, indemnification and jurisdiction issues defined therein. Any holder of this document is advised that information contained hereon reflects the Company's findings at the time of its intervention only and within the limits of Client's instructions, if any. The Company's sole responsibility is to its Client and this document does not exonerate parties to a transaction from exercising all their rights and obligations under the transaction documents. This document cannot be reproduced except in full, without prior written approval of the Company. Any unauthorized alteration, forgery or falsification of the content or appearance of this document is unlawful and offenders may be prosecuted to the fullest extent of the law.

Unless otherwise stated the results shown in this test report refer only to the sample(s) tested and such sample(s) are retained for 30 days only.

SGS Hong Kong Limited | Office: Units 303 & 305, 3/F Building 22E, Phase 3, HK Science Park, New Territories, Hong Kong t (852) 2334 4481 f (852) 2764 3126 e [mktg.hk@sgs.com](mailto:mktg.hk@sgs.com)  
 Laboratory: 1/F, Units 16-29 3/F, 4/F & 5/F, On Wui Centre, 25 Lok Yip Road, Fanling, New Territories, Hong Kong. [www.sgs.com/en-hk/](http://www.sgs.com/en-hk/)

**Notes:**

(1) Interpretation of screening results by X-ray fluorescence spectrometry (XRF):

(a) Screening limits in mg/kg for regulated elements in various matrices according to GB/T 39560.301-2020 Table A.2.

Element	Polymer	Metal	Composite Materials
Cd	$BL \leq (70-3\sigma) < X < (130+3\sigma) \leq OL$	$BL \leq (70-3\sigma) < X < (130+3\sigma) \leq OL$	$LOD < X < (150+3\sigma) \leq OL$
Pb	$BL \leq (700-3\sigma) < X < (1300+3\sigma) \leq OL$	$BL \leq (700-3\sigma) < X < (1300+3\sigma) \leq OL$	$BL \leq (500-3\sigma) < X < (1500+3\sigma) \leq OL$
Hg	$BL \leq (700-3\sigma) < X < (1300+3\sigma) \leq OL$	$BL \leq (700-3\sigma) < X < (1300+3\sigma) \leq OL$	$BL \leq (500-3\sigma) < X < (1500+3\sigma) \leq OL$
Br	$BL \leq (300-3\sigma) < X$	Not applicable	$BL \leq (250-3\sigma) < X$
Cr	$BL \leq (700-3\sigma) < X$	$BL \leq (700-3\sigma) < X$	$BL \leq (500-3\sigma) < X$

(b) If the maximum allowed level restricts PBB/PBDE and Cr(VI) rather than Br and Cr, the exceptions are the XRF determinations of Br and Cr. If the quantitative results for the elements Br and/or are higher than the limit (for Br calculated based on the stoichiometry of Br in the most common congeners of PBB/PBDE), the sample is "inconclusive".

(c) Results are obtained by EDXRF for primary screening, LOD = Limit of Detection, BL = Below Limit, OL = Over Limit, IN (The symbol X marks the region)= Inconclusive, where further investigation is necessary, and further chemical testing by ICP-OES (for Cd, Pb, Hg), UV-Vis (for Cr(VI)) and GC-MS (for PBBs/PBDEs) are recommended to be performed.

(d) The EDXRF screening test for RoHS elements – The reading may be different to the actual content in the sample be of non-uniformity composition.

(2) Screening results of Phthalates (PHTH) are for primary screening, and further chemical testing by GC-MS (for DBP, BBP, DEHP and DIBP) are recommended to be performed if the concentration exceeds the below warning value (unit: mg/kg).

Test Items	CAS No.	Polymer/ Composite Materials
Dibutyl Phthalate (DBP)	84-74-2	$BL \leq 600 < X$
Benzylbutyl Phthalate (BBP)	85-68-7	$BL \leq 600 < X$
Bis(2-ethylhexyl) Phthalate (DEHP)	117-81-7	$BL \leq 600 < X$
Diisobutyl Phthalate (DIBP)	84-69-5	$BL \leq 600 < X$

(3) Interpretation of results by chemical tests:

(a) mg/kg = 0.0001%, MDL=Method detection Limit, ND = Not Detected (&lt;MDL), --- = Not Applicable.

(b) Unit and MDL in wet chemical test

Test Items	Pb	Cd	Hg	DBP	BBP	DEHP	DIBP
Unit	mg/kg	mg/kg	mg/kg	mg/kg	mg/kg	mg/kg	mg/kg
MDL	10	10	10	100	100	100	100

The MDL for single compound of PBBs and PBDEs is 100 mg/kg.

MDL of Cr(VI) for polymer, composite and leather sample is 10 mg/kg.

 MDL of Cr(VI) for metal sample is 0.10µg/cm<sup>2</sup>.

(c) ▼ =Metal sample

- a. The sample is positive for Cr(VI) if the Cr(VI) concentration is greater than  $0.13\mu\text{g}/\text{cm}^2$ .  
The sample coating is considered to contain Cr(VI)
- b. The sample is negative for Cr(VI) if Cr(VI) is ND (concentration less than  $0.10\mu\text{g}/\text{cm}^2$ ).  
The coating is considered a non-Cr(VI) based coating
- c. The result between  $0.10\mu\text{g}/\text{cm}^2$  and  $0.13\mu\text{g}/\text{cm}^2$  is considered to be inconclusive  
- unavoidable coating variations may influence the determination

Information on storage conditions and production date of the tested sample is unavailable and thus Cr(VI) results represent status of the sample at the time of testing.

- (4) GB/T 26572-2011 "Requirement of concentration limits for certain restricted substances in electrical and electronic products" and its amendment No.1 sets the maximum concentration values tolerated by weight in homogeneous materials as Cd: 0.01%, Pb/Hg/Cr(VI)/PBB/PBDE/DBP/DIBP/BBP/DEHP: 0.1%. Effective date: 2026.01.01.

This document is issued by the Company subject to its General Conditions of Service printed overleaf, available on request or accessible at <http://www.sgs.com/en/Terms-and-Conditions.aspx> and, for electronic format documents, subject to Terms and Conditions for Electronic Documents at <http://www.sgs.com/en/Terms-and-Conditions/Terms-e-Document.aspx>. Attention is drawn to the limitation of liability, indemnification and jurisdiction issues defined therein. Any holder of this document is advised that information contained hereon reflects the Company's findings at the time of its intervention only and within the limits of Client's instructions, if any. The Company's sole responsibility is to its Client and this document does not exonerate parties to a transaction from exercising all their rights and obligations under the transaction documents. This document cannot be reproduced except in full, without prior written approval of the Company. Any unauthorized alteration, forgery or falsification of the content or appearance of this document is unlawful and offenders may be prosecuted to the fullest extent of the law.

Unless otherwise stated the results shown in this test report refer only to the sample(s) tested and such sample(s) are retained for 30 days only.

SGS Hong Kong Limited | Office: Units 303 & 305, 3/F Building 22E, Phase 3, HK Science Park, New Territories, Hong Kong t (852) 2334 4481 f (852) 2764 3126 e [mktg.hk@sgs.com](mailto:mktg.hk@sgs.com)  
Laboratory: 1/F, Units 16-29 3/F, 4/F & 5/F, On Wui Centre, 25 Lok Yip Road, Fanling, New Territories, Hong Kong. [www.sgs.com/en-hk/](http://www.sgs.com/en-hk/)

**Appendix 1**

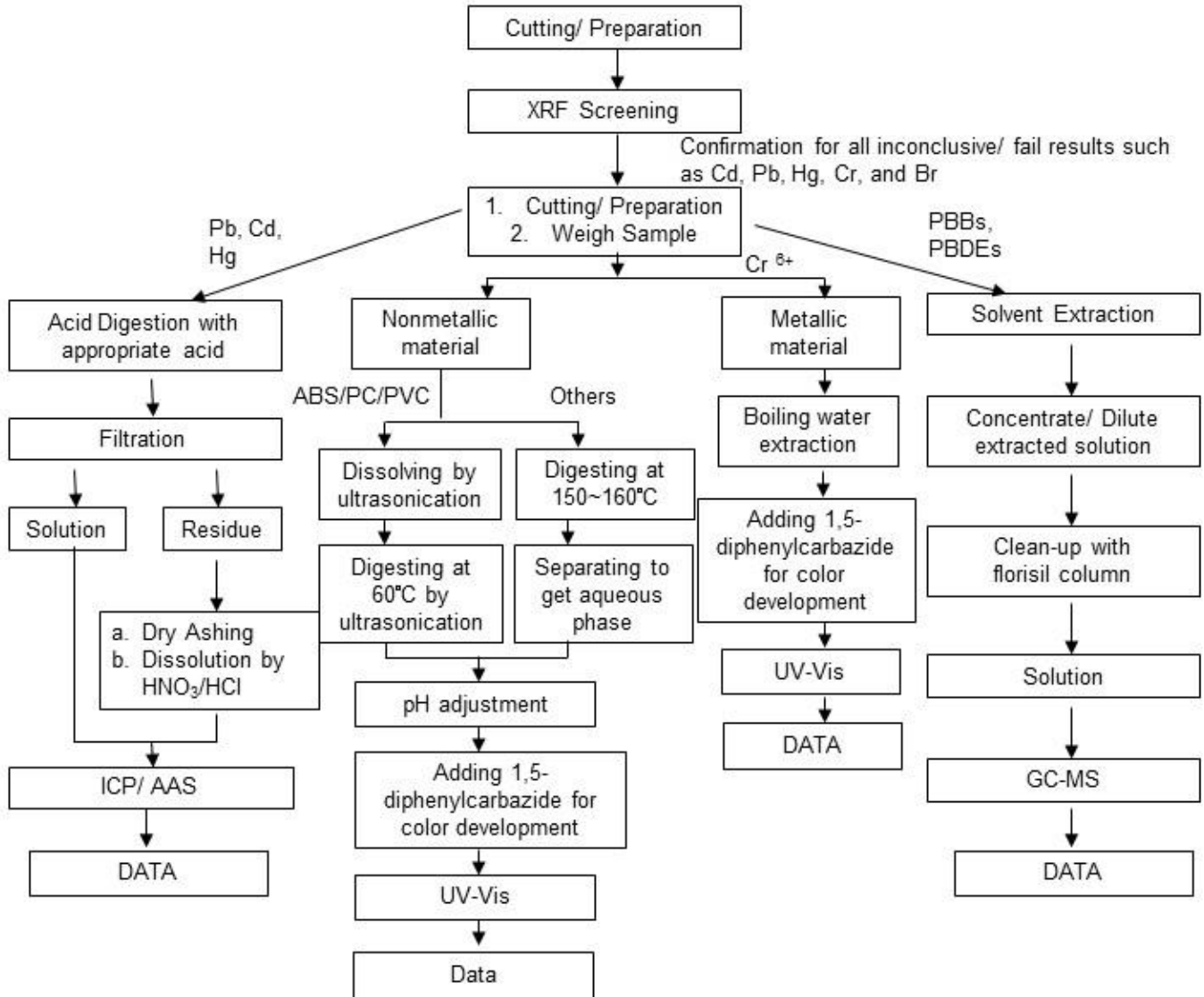
Category	Decision Rule Statement
1	<p>The decision rule for conformity reporting is based on the non-binary statement with guard band (is equal to the expanded measurement uncertainty with a 95% coverage probability, <math>w = U95</math>) in ILAC-G8:09/2019 Clause 4.2.3.</p> <p>A. "Pass - the measured value is within (or below / above) the acceptance limit, where the acceptance limit is below / above to the guard band." or "Pass - The measured values were observed in tolerance at the points tested. The specific false accept risk is up to 2.5%."</p> <p>B. "Conditional Pass - The measured values were observed in tolerance at the points tested. However, a portion of the expanded measurement uncertainty intervals about one or more measured values exceeded / out of tolerance. When the measured result is close to the tolerance, the specific false accept risk is up to 50%."</p> <p>C. "Conditional Fail - One or more measured values were observed out of tolerance at the points tested. However, a portion of the expanded measurement uncertainty intervals about one or more measured values were in tolerance. When the measured result is close to the tolerance, the specific false reject risk is up to 50%."</p> <p>D. "Fail - the measured value is out of (or below / above) the tolerance limit added / subtracted to the guard band." or "Fail - One or more measured values were observed out of tolerance at the points tested". The specific false reject risk is up to 2.5%.</p>
2	<p>The decision rule for conformity reporting is based on EN 1811:2023: Reference test method for release of nickel from all post assemblies which are inserted into pierced parts of the human body and articles intended to come into direct and prolonged contact with the skin in Section 9.2 interpretation of results.</p>
3	<p>The decision rule for conformity reporting is based on the general consideration of simple acceptance as stated in ISO/IEC Guide 98-3: "Uncertainty of measurement - Part 3: Guide to the expression of uncertainty in measurement (GUM 1995)", and more specifically for analytical measurements to the EURACHEM/CITAC Guide 2012 "Quantifying Uncertainty in Analytical Measurement".</p>
4	<p>The decision rule for conformity reporting is according to the IEC 62321-7-1 Edition 1.0 2015-09 Section 7: Table 1 - (comparison to standard solutions and interpretation of result)</p>
5	<p>The decision rule for conformity reporting is according to the IEC 62321-3-1 Edition 1.0 2013-06 Annex A.3 interpretation of result.</p>
6	<p>The decision rule for conformity reporting is according to the GB/T 39560.701-2020 Section 7: Table 1 - (comparison to standard solutions and interpretation of result)</p>
7	<p>The decision rule for conformity reporting is according to the requested specification or standard (ASTM F963-23 section 4.3.5)</p>
8	<p>The decision rule for conformity reporting is according to the requested specification or standard (AS/NZS ISO 8124 Part 3 section 4.2)</p>
9	<p>The decision rule for conformity reporting is according to the GB/T 39560.301-2020 Annex A.3 interpretation of result</p>
Remark	<p>If the decision rule is not feasible to be used and the uncertainty of the result is able to be provided, the uncertainty range of the result will be shown in the report. Otherwise, only result will be shown in the report.</p>

This document is issued by the Company subject to its General Conditions of Service printed overleaf, available on request or accessible at <http://www.sgs.com/en/Terms-and-Conditions.aspx> and, for electronic format documents, subject to Terms and Conditions for Electronic Documents at <http://www.sgs.com/en/Terms-and-Conditions/Terms-e-Documents.aspx>. Attention is drawn to the limitation of liability, indemnification and jurisdiction issues defined therein. Any holder of this document is advised that information contained hereon reflects the Company's findings at the time of its intervention only and within the limits of Client's instructions, if any. The Company's sole responsibility is to its Client and this document does not exonerate parties to a transaction from exercising all their rights and obligations under the transaction documents. This document cannot be reproduced except in full, without prior written approval of the Company. Any unauthorized alteration, forgery or falsification of the content or appearance of this document is unlawful and offenders may be prosecuted to the fullest extent of the law.

Unless otherwise stated the results shown in this test report refer only to the sample(s) tested and such sample(s) are retained for 30 days only.

Attachment:

RoHS Verification Testing Flow Chart



- Note : 1) Boiling water test method was also performed for Cr (VI) analysis in metal sample.  
 2) The polymeric samples were dissolved totally by pre-conditioning method according to above flow chat for Cd, Pb and Hg contents analysis.

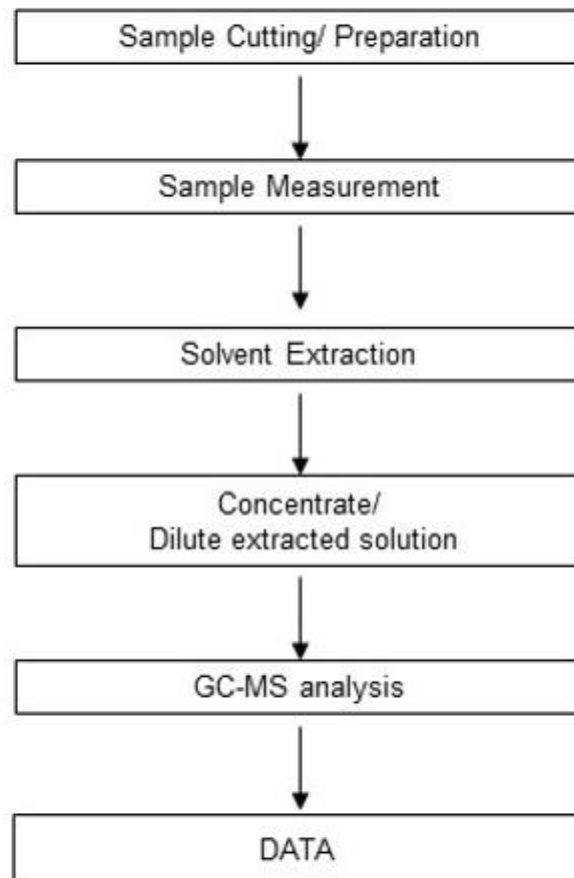
This document is issued by the Company subject to its General Conditions of Service printed overleaf, available on request or accessible at <http://www.sgs.com/en/Terms-and-Conditions.aspx> and, for electronic format documents, subject to Terms and Conditions for Electronic Documents at <http://www.sgs.com/en/Terms-and-Conditions/Terms-e-Document.aspx>. Attention is drawn to the limitation of liability, indemnification and jurisdiction issues defined therein. Any holder of this document is advised that information contained hereon reflects the Company's findings at the time of its intervention only and within the limits of Client's instructions, if any. The Company's sole responsibility is to its Client and this document does not exonerate parties to a transaction from exercising all their rights and obligations under the transaction documents. This document cannot be reproduced except in full, without prior written approval of the Company. Any unauthorized alteration, forgery or falsification of the content or appearance of this document is unlawful and offenders may be prosecuted to the fullest extent of the law.

Unless otherwise stated the results shown in this test report refer only to the sample(s) tested and such sample(s) are retained for 30 days only.

Attachment:

### Phthalates Testing Flow Chart

Method: IEC 62321-8:2017

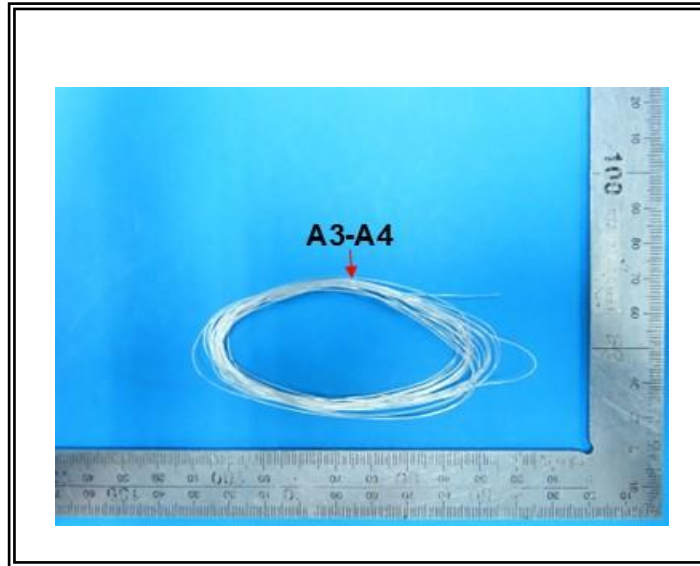
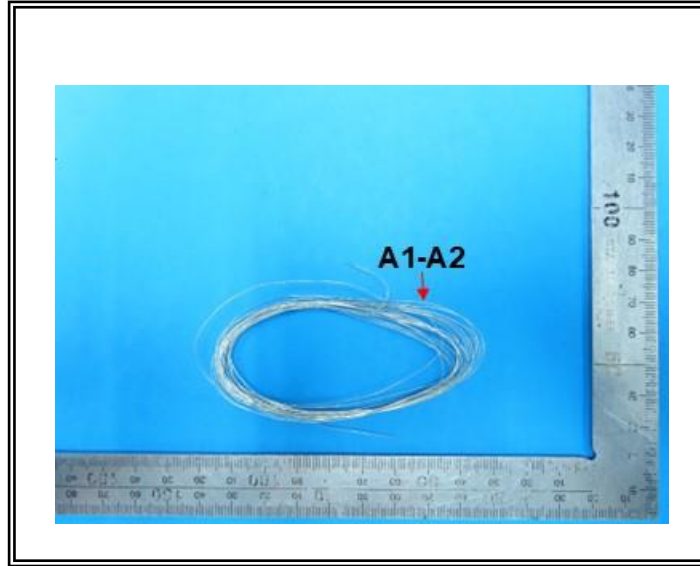


This document is issued by the Company subject to its General Conditions of Service printed overleaf, available on request or accessible at <http://www.sgs.com/en/Terms-and-Conditions.aspx> and, for electronic format documents, subject to Terms and Conditions for Electronic Documents at <http://www.sgs.com/en/Terms-and-Conditions/Terms-e-Document.aspx>. Attention is drawn to the limitation of liability, indemnification and jurisdiction issues defined therein. Any holder of this document is advised that information contained hereon reflects the Company's findings at the time of its intervention only and within the limits of Client's instructions, if any. The Company's sole responsibility is to its Client and this document does not exonerate parties to a transaction from exercising all their rights and obligations under the transaction documents. This document cannot be reproduced except in full, without prior written approval of the Company. Any unauthorized alteration, forgery or falsification of the content or appearance of this document is unlawful and offenders may be prosecuted to the fullest extent of the law.

Unless otherwise stated the results shown in this test report refer only to the sample(s) tested and such sample(s) are retained for 30 days only.

SGS Hong Kong Limited Office: Units 303 & 305, 3/F Building 22E, Phase 3, HK Science Park, New Territories, Hong Kong t (852) 2334 4481 f (852) 2764 3126 e [mktg.hk@sgs.com](mailto:mktg.hk@sgs.com)  
Laboratory: 1/F, Units 16-29 3/F, 4/F & 5/F, On Wui Centre, 25 Lok Yip Road, Fanling, New Territories, Hong Kong. [www.sgs.com/en-hk/](http://www.sgs.com/en-hk/)

Sample photo :

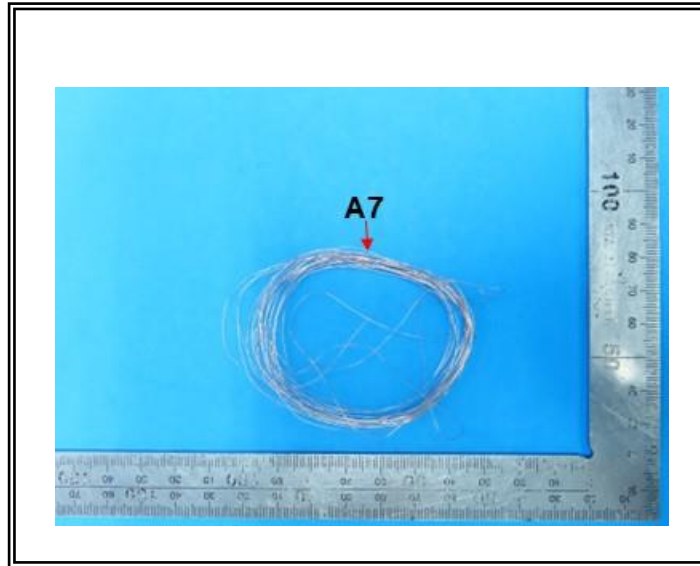
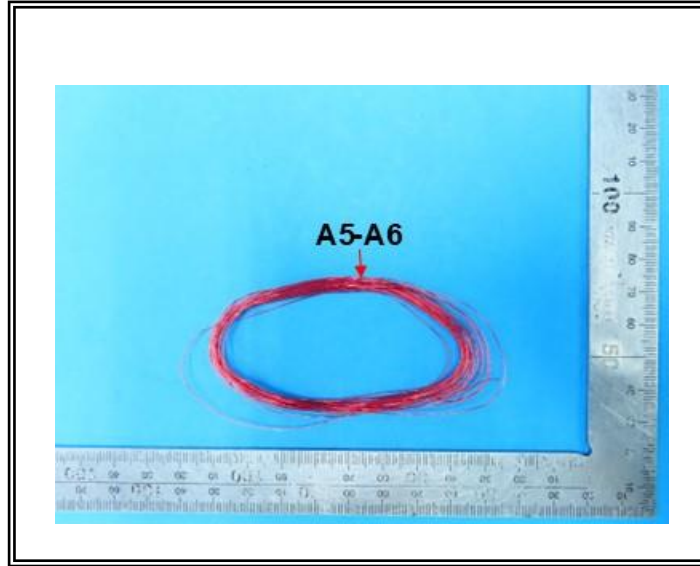


SGS authenticate the photo on original report only

This document is issued by the Company subject to its General Conditions of Service printed overleaf, available on request or accessible at <http://www.sgs.com/en/Terms-and-Conditions.aspx> and, for electronic format documents, subject to Terms and Conditions for Electronic Documents at <http://www.sgs.com/en/Terms-and-Conditions/Terms-e-Documents.aspx>. Attention is drawn to the limitation of liability, indemnification and jurisdiction issues defined therein. Any holder of this document is advised that information contained hereon reflects the Company's findings at the time of its intervention only and within the limits of Client's instructions, if any. The Company's sole responsibility is to its Client and this document does not exonerate parties to a transaction from exercising all their rights and obligations under the transaction documents. This document cannot be reproduced except in full, without prior written approval of the Company. Any unauthorized alteration, forgery or falsification of the content or appearance of this document is unlawful and offenders may be prosecuted to the fullest extent of the law.

Unless otherwise stated the results shown in this test report refer only to the sample(s) tested and such sample(s) are retained for 30 days only.

Sample photo :

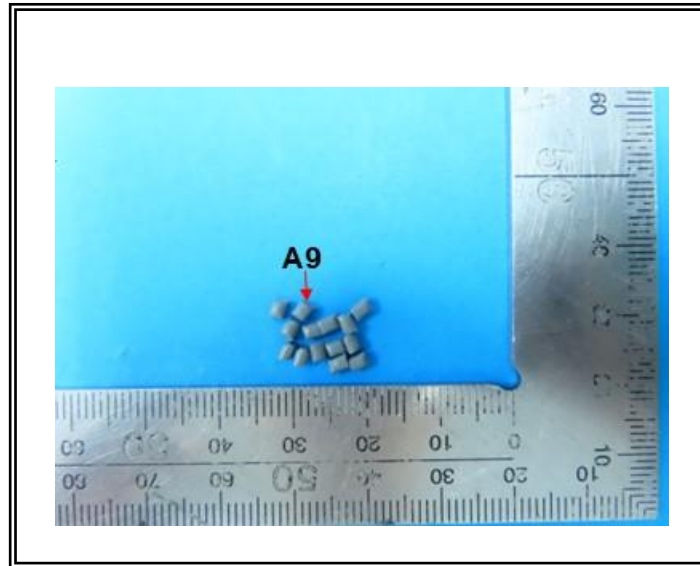
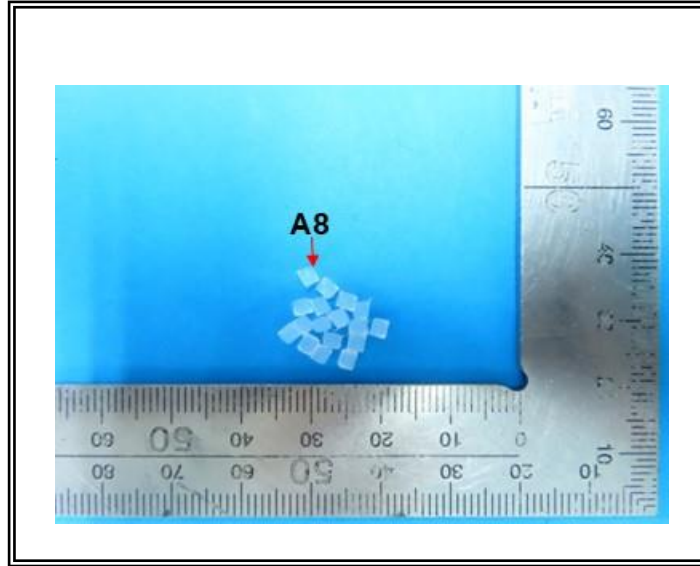


SGS authenticate the photo on original report only

This document is issued by the Company subject to its General Conditions of Service printed overleaf, available on request or accessible at <http://www.sgs.com/en/Terms-and-Conditions.aspx> and, for electronic format documents, subject to Terms and Conditions for Electronic Documents at <http://www.sgs.com/en/Terms-and-Conditions/Terms-e-Documents.aspx>. Attention is drawn to the limitation of liability, indemnification and jurisdiction issues defined therein. Any holder of this document is advised that information contained hereon reflects the Company's findings at the time of its intervention only and within the limits of Client's instructions, if any. The Company's sole responsibility is to its Client and this document does not exonerate parties to a transaction from exercising all their rights and obligations under the transaction documents. This document cannot be reproduced except in full, without prior written approval of the Company. Any unauthorized alteration, forgery or falsification of the content or appearance of this document is unlawful and offenders may be prosecuted to the fullest extent of the law.

Unless otherwise stated the results shown in this test report refer only to the sample(s) tested and such sample(s) are retained for 30 days only.

Sample photo :



SGS authenticate the photo on original report only

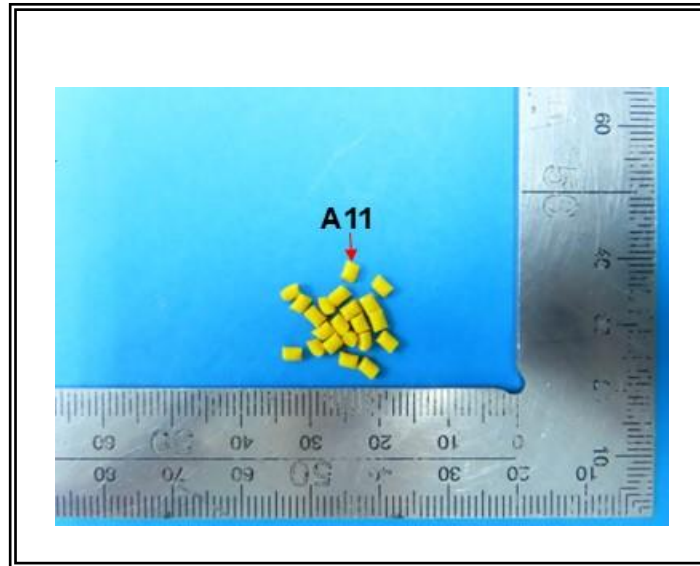
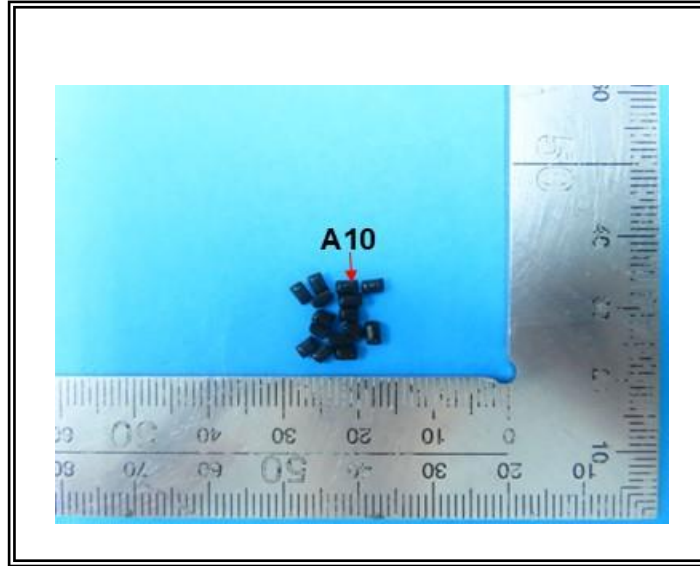
This document is issued by the Company subject to its General Conditions of Service printed overleaf, available on request or accessible at <http://www.sgs.com/en/Terms-and-Conditions.aspx> and, for electronic format documents, subject to Terms and Conditions for Electronic Documents at <http://www.sgs.com/en/Terms-and-Conditions/Terms-e-Documents.aspx>. Attention is drawn to the limitation of liability, indemnification and jurisdiction issues defined therein. Any holder of this document is advised that information contained hereon reflects the Company's findings at the time of its intervention only and within the limits of Client's instructions, if any. The Company's sole responsibility is to its Client and this document does not exonerate parties to a transaction from exercising all their rights and obligations under the transaction documents. This document cannot be reproduced except in full, without prior written approval of the Company. Any unauthorized alteration, forgery or falsification of the content or appearance of this document is unlawful and offenders may be prosecuted to the fullest extent of the law.

Unless otherwise stated the results shown in this test report refer only to the sample(s) tested and such sample(s) are retained for 30 days only.

SGS Hong Kong Limited

Office: Units 303 & 305, 3/F Building 22E, Phase 3, HK Science Park, New Territories, Hong Kong t (852) 2334 4481 f (852) 2764 3126 e [mktg.hk@sgs.com](mailto:mktg.hk@sgs.com)  
Laboratory: 1/F, Units 16-29 3/F, 4/F & 5/F, On Wui Centre, 25 Lok Yip Road, Fanling, New Territories, Hong Kong. [www.sgs.com/en-hk/](http://www.sgs.com/en-hk/)

Sample photo :

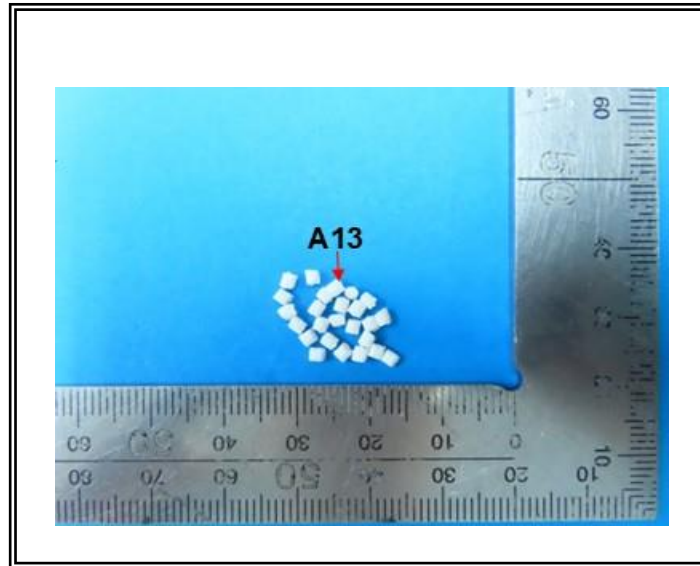
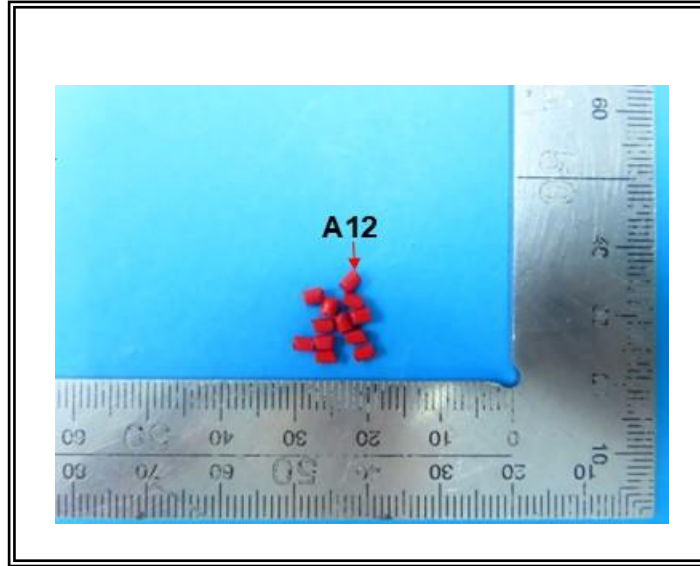


SGS authenticate the photo on original report only

This document is issued by the Company subject to its General Conditions of Service printed overleaf, available on request or accessible at <http://www.sgs.com/en/Terms-and-Conditions.aspx> and, for electronic format documents, subject to Terms and Conditions for Electronic Documents at <http://www.sgs.com/en/Terms-and-Conditions/Terms-e-Documents.aspx>. Attention is drawn to the limitation of liability, indemnification and jurisdiction issues defined therein. Any holder of this document is advised that information contained hereon reflects the Company's findings at the time of its intervention only and within the limits of Client's instructions, if any. The Company's sole responsibility is to its Client and this document does not exonerate parties to a transaction from exercising all their rights and obligations under the transaction documents. This document cannot be reproduced except in full, without prior written approval of the Company. Any unauthorized alteration, forgery or falsification of the content or appearance of this document is unlawful and offenders may be prosecuted to the fullest extent of the law.

Unless otherwise stated the results shown in this test report refer only to the sample(s) tested and such sample(s) are retained for 30 days only.

Sample photo :



SGS authenticate the photo on original report only

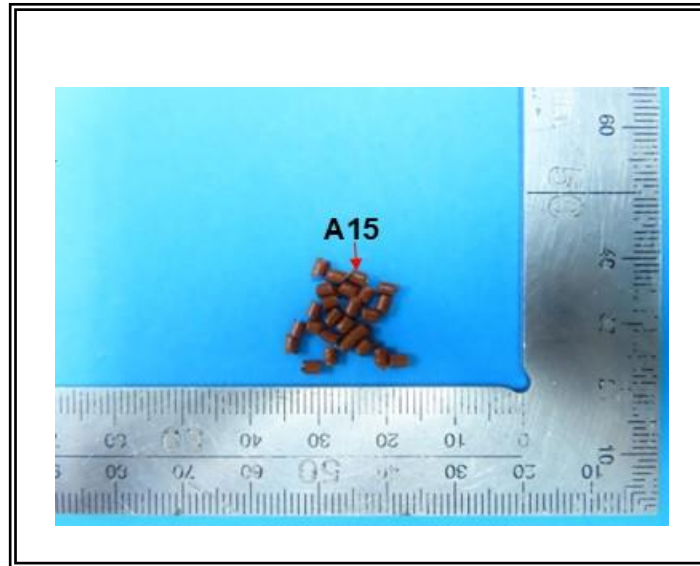
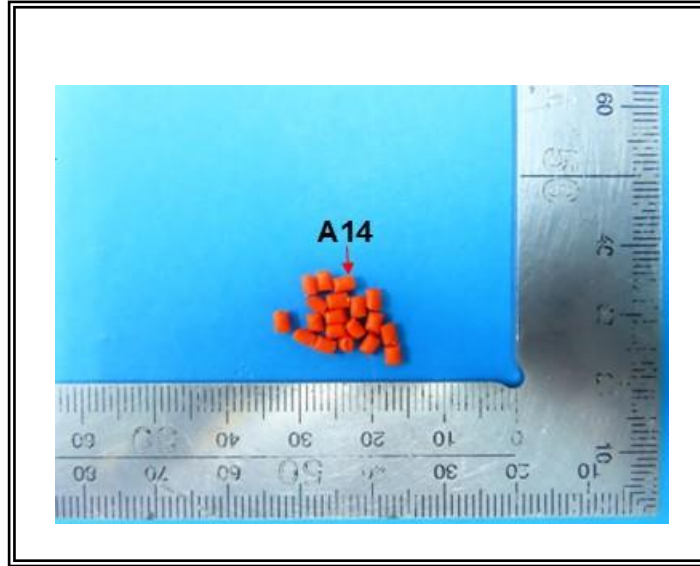
This document is issued by the Company subject to its General Conditions of Service printed overleaf, available on request or accessible at <http://www.sgs.com/en/Terms-and-Conditions.aspx> and, for electronic format documents, subject to Terms and Conditions for Electronic Documents at <http://www.sgs.com/en/Terms-and-Conditions/Terms-e-Documents.aspx>. Attention is drawn to the limitation of liability, indemnification and jurisdiction issues defined therein. Any holder of this document is advised that information contained hereon reflects the Company's findings at the time of its intervention only and within the limits of Client's instructions, if any. The Company's sole responsibility is to its Client and this document does not exonerate parties to a transaction from exercising all their rights and obligations under the transaction documents. This document cannot be reproduced except in full, without prior written approval of the Company. Any unauthorized alteration, forgery or falsification of the content or appearance of this document is unlawful and offenders may be prosecuted to the fullest extent of the law.

Unless otherwise stated the results shown in this test report refer only to the sample(s) tested and such sample(s) are retained for 30 days only.

SGS Hong Kong Limited

Office: Units 303 & 305, 3/F Building 22E, Phase 3, HK Science Park, New Territories, Hong Kong t (852) 2334 4481 f (852) 2764 3126 e [mktg.hk@sgs.com](mailto:mktg.hk@sgs.com)  
Laboratory: 1/F, Units 16-29 3/F, 4/F & 5/F, On Wui Centre, 25 Lok Yip Road, Fanling, New Territories, Hong Kong. [www.sgs.com/en-hk/](http://www.sgs.com/en-hk/)

Sample photo :

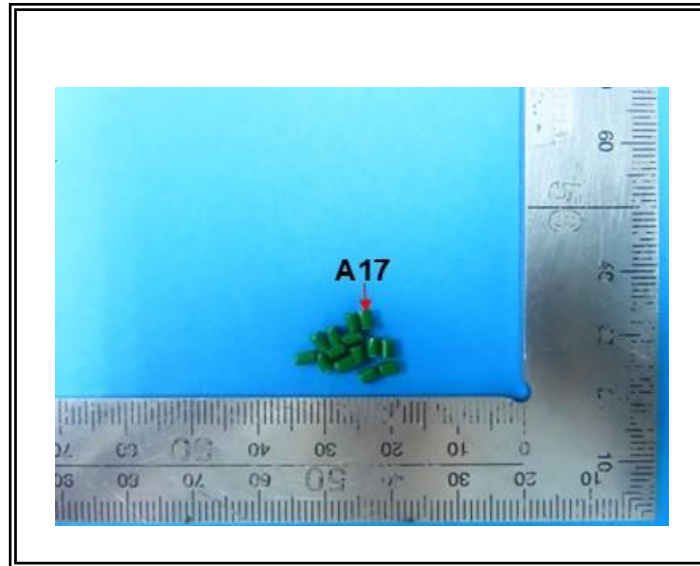
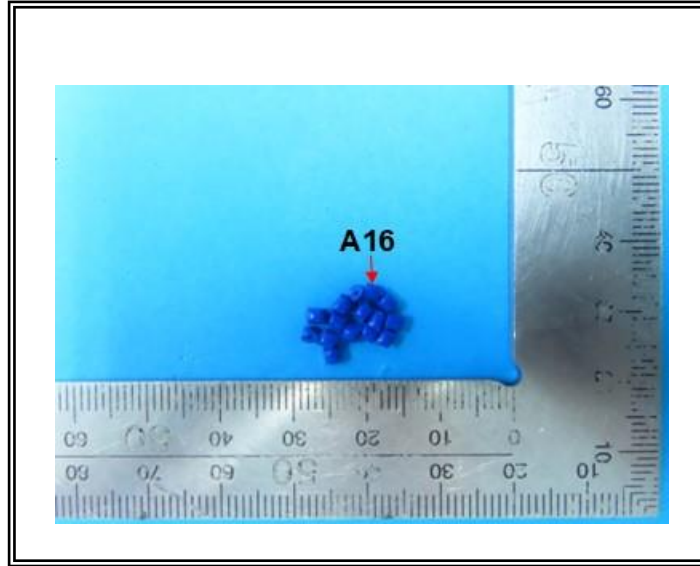


SGS authenticate the photo on original report only

This document is issued by the Company subject to its General Conditions of Service printed overleaf, available on request or accessible at <http://www.sgs.com/en/Terms-and-Conditions.aspx> and, for electronic format documents, subject to Terms and Conditions for Electronic Documents at <http://www.sgs.com/en/Terms-and-Conditions/Terms-e-Documents.aspx>. Attention is drawn to the limitation of liability, indemnification and jurisdiction issues defined therein. Any holder of this document is advised that information contained hereon reflects the Company's findings at the time of its intervention only and within the limits of Client's instructions, if any. The Company's sole responsibility is to its Client and this document does not exonerate parties to a transaction from exercising all their rights and obligations under the transaction documents. This document cannot be reproduced except in full, without prior written approval of the Company. Any unauthorized alteration, forgery or falsification of the content or appearance of this document is unlawful and offenders may be prosecuted to the fullest extent of the law.

Unless otherwise stated the results shown in this test report refer only to the sample(s) tested and such sample(s) are retained for 30 days only.

Sample photo :



SGS authenticate the photo on original report only

\*\*\* End of Report \*\*\*

This document is issued by the Company subject to its General Conditions of Service printed overleaf, available on request or accessible at <http://www.sgs.com/en/Terms-and-Conditions.aspx> and, for electronic format documents, subject to Terms and Conditions for Electronic Documents at <http://www.sgs.com/en/Terms-and-Conditions/Terms-e-Documents.aspx>. Attention is drawn to the limitation of liability, indemnification and jurisdiction issues defined therein. Any holder of this document is advised that information contained hereon reflects the Company's findings at the time of its intervention only and within the limits of Client's instructions, if any. The Company's sole responsibility is to its Client and this document does not exonerate parties to a transaction from exercising all their rights and obligations under the transaction documents. This document cannot be reproduced except in full, without prior written approval of the Company. Any unauthorized alteration, forgery or falsification of the content or appearance of this document is unlawful and offenders may be prosecuted to the fullest extent of the law.

Unless otherwise stated the results shown in this test report refer only to the sample(s) tested and such sample(s) are retained for 30 days only.

SGS Hong Kong Limited

Office: Units 303 & 305, 3/F Building 22E, Phase 3, HK Science Park, New Territories, Hong Kong t (852) 2334 4481 f (852) 2764 3126 e [mktg.hk@sgs.com](mailto:mktg.hk@sgs.com)  
Laboratory: 1/F, Units 16-29 3/F, 4/F & 5/F, On Wui Centre, 25 Lok Yip Road, Fanling, New Territories, Hong Kong. [www.sgs.com/en-hk/](http://www.sgs.com/en-hk/)